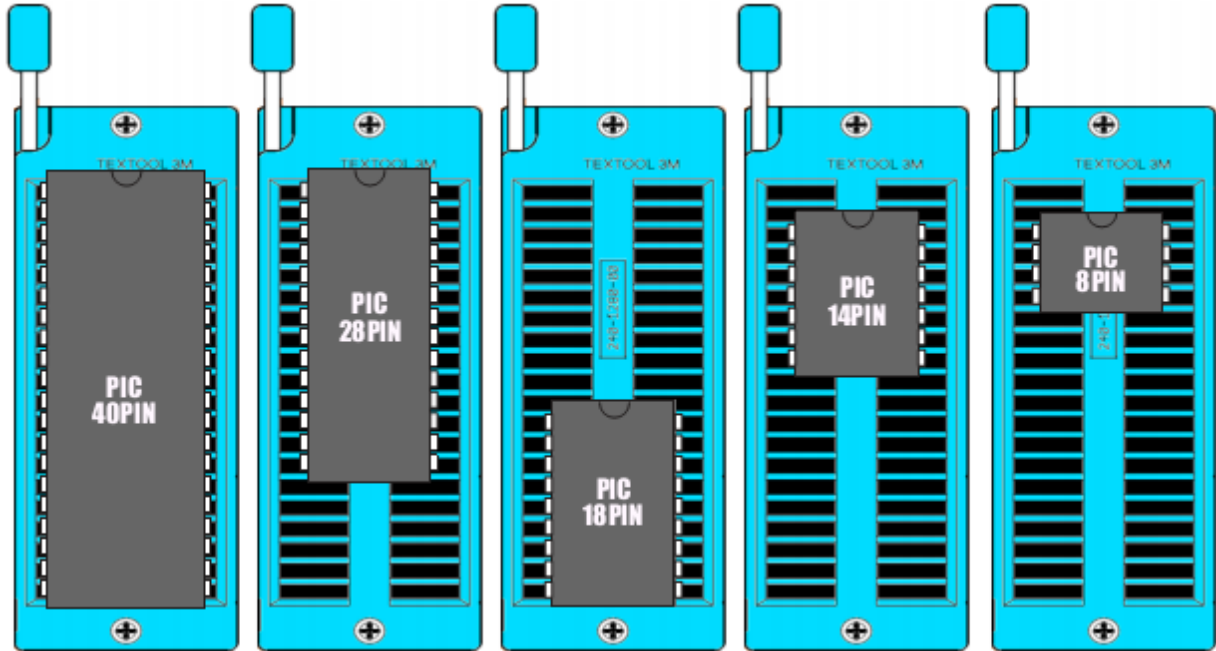


PICkit 2 Operating Manual

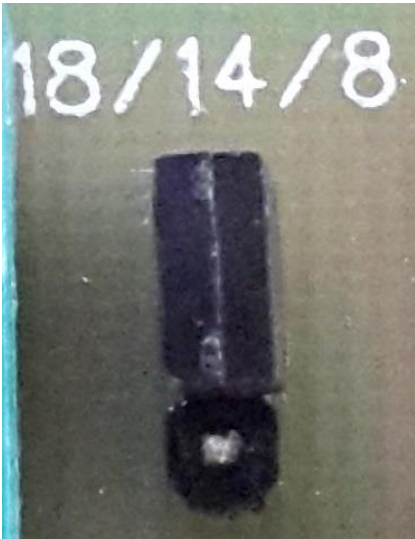
PIC Placement diagram



The IC should be placed in the ZIF socket as shown in the diagram.

Jumper setting

- For 18/14/8 PIC the jumper is placed as shown in the below figure



- For 40/28 PIC the jumper is placed as shown in the below figure



LED indicators

POWER – Red LED

TARGET – Green LED

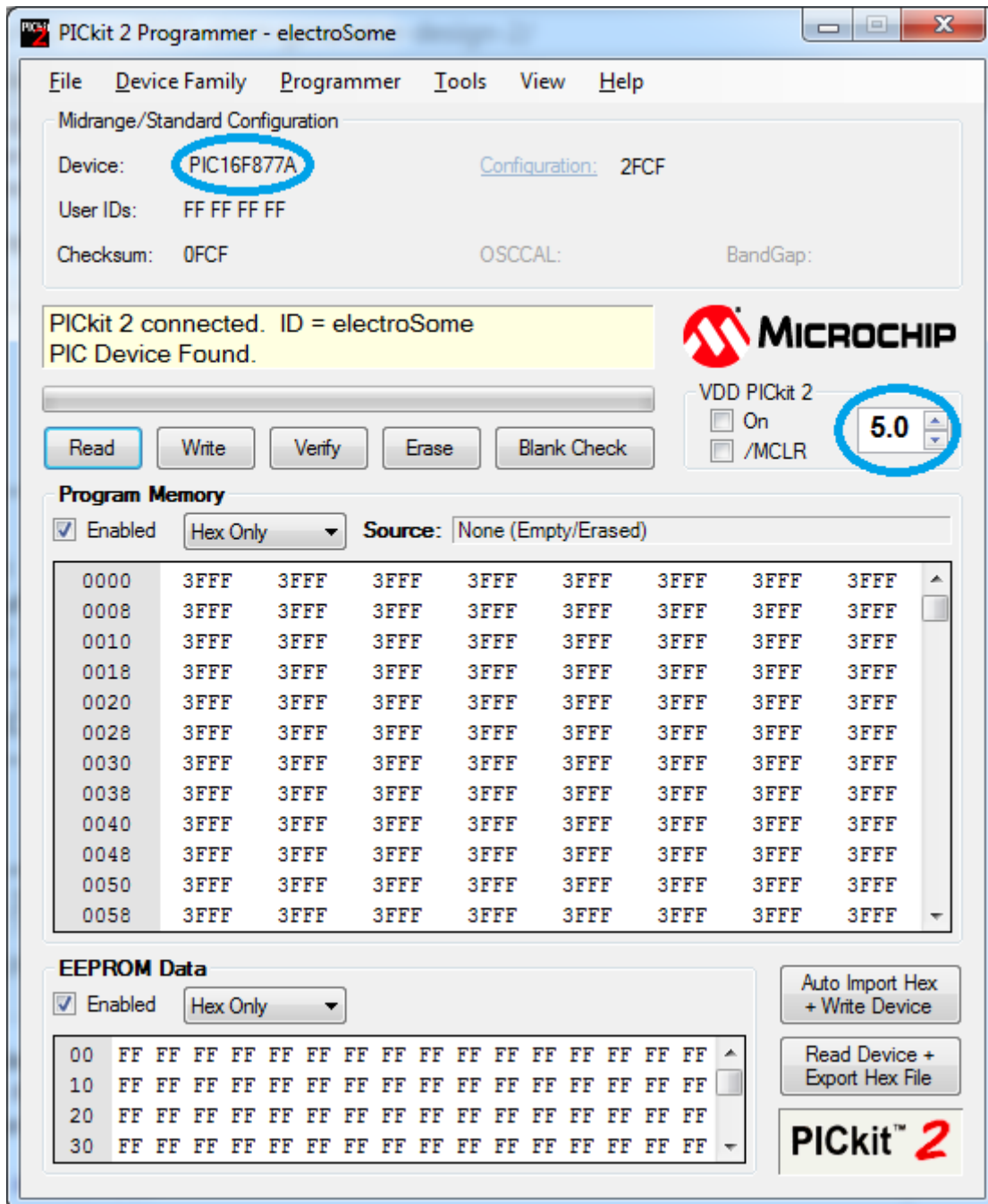
BUSY – Blue LED

Steps to program microcontrollers

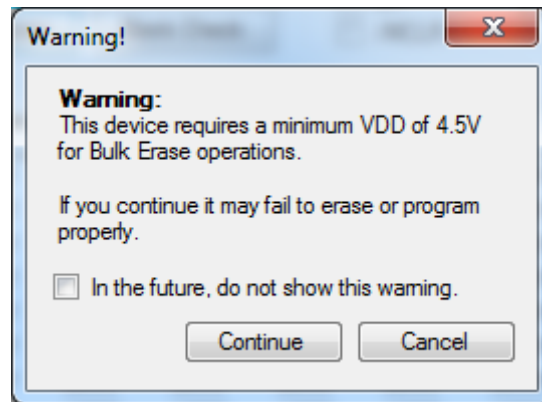
Prerequisite: The computer should be installed with Microchip's "PICkit 2" programmer software

- Connect the PICkit 2 programmer to an USB port of computer.
- Open the programmer software.

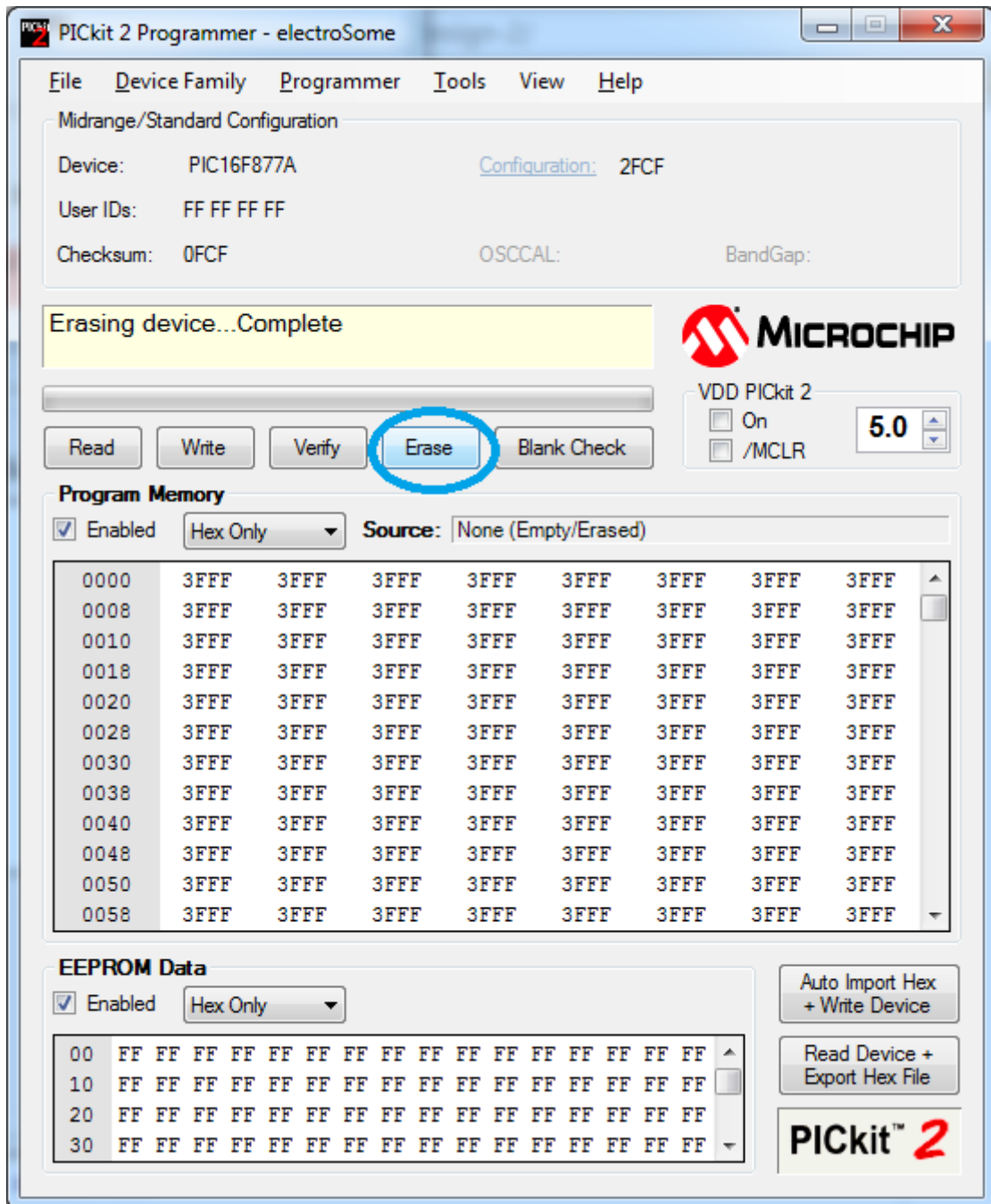
- Ensure that the device is detected correctly.



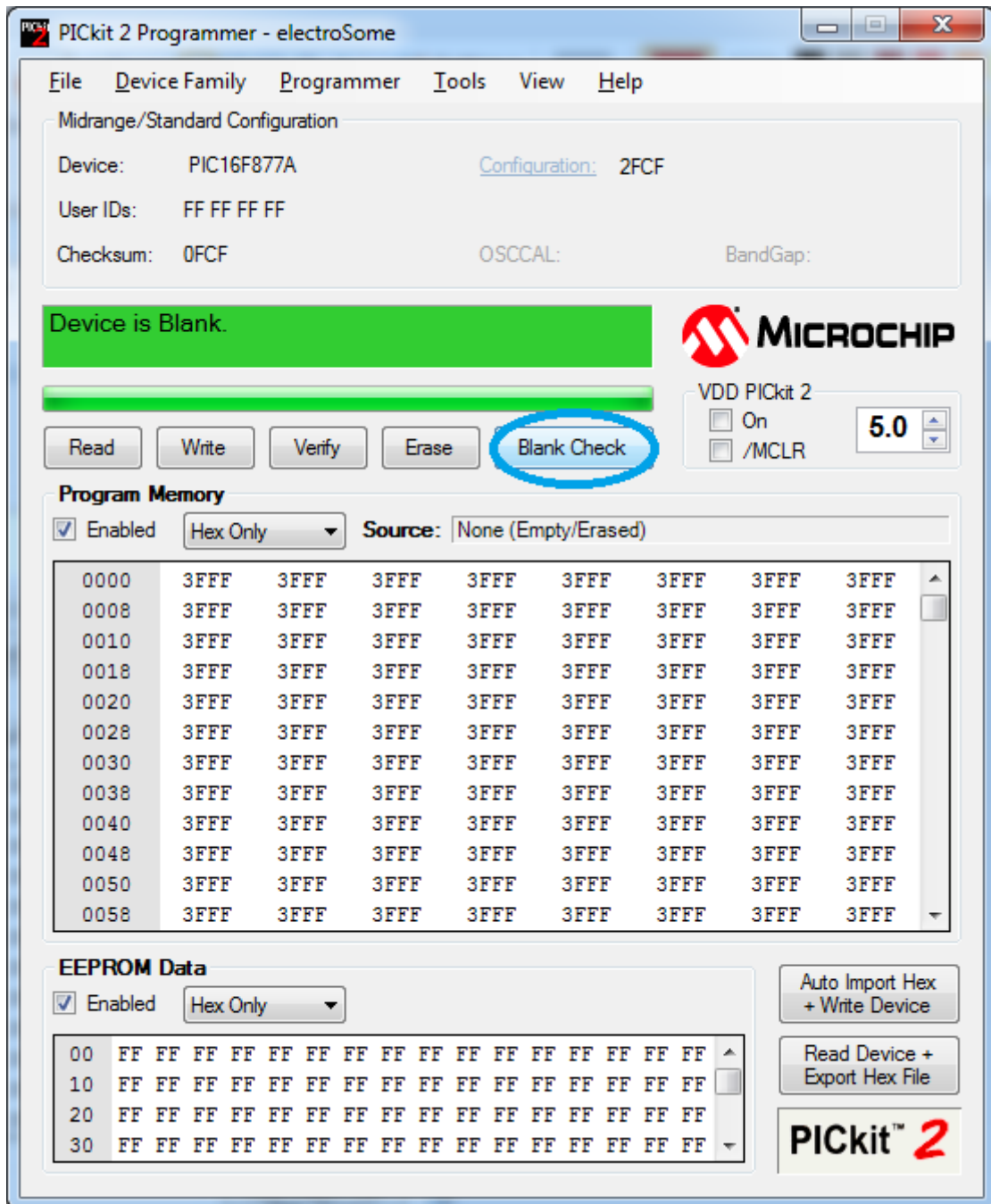
- The VDD PICkit 2 should be set at 5.0 volts or else an error dialogue will be shown.



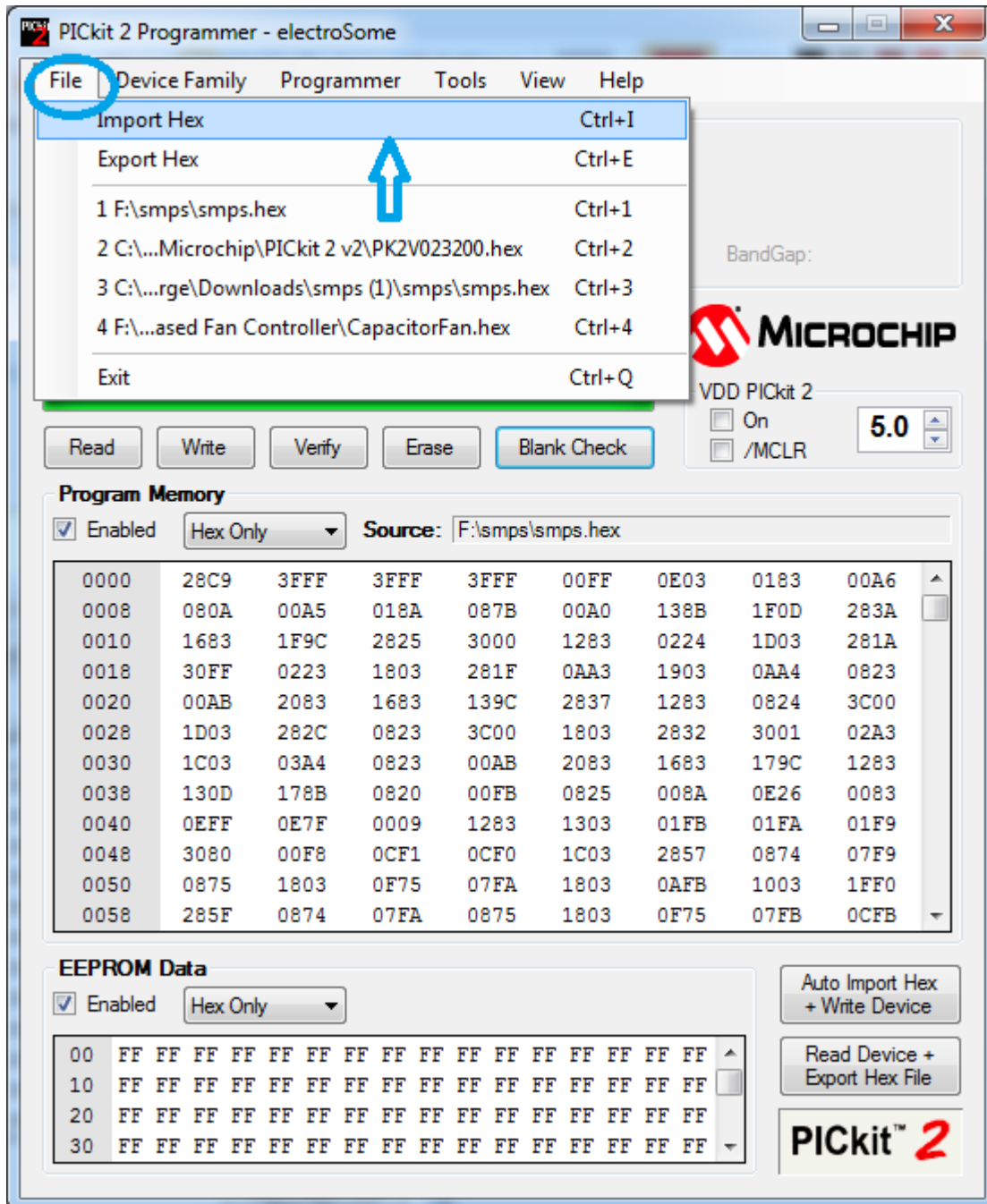
- To erase the microcontroller click on the Erase button.

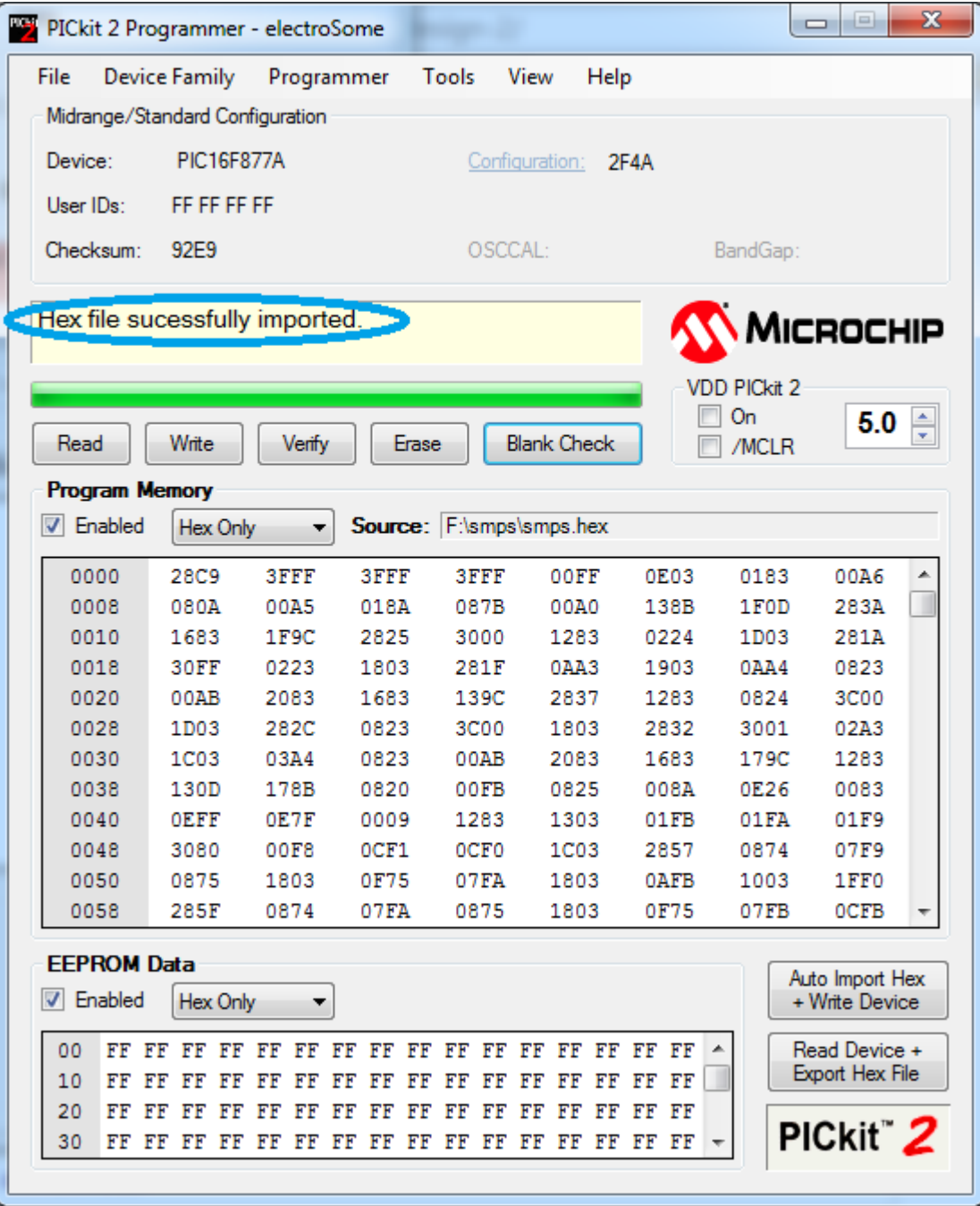


- To check whether the device is blank click the blank check button.

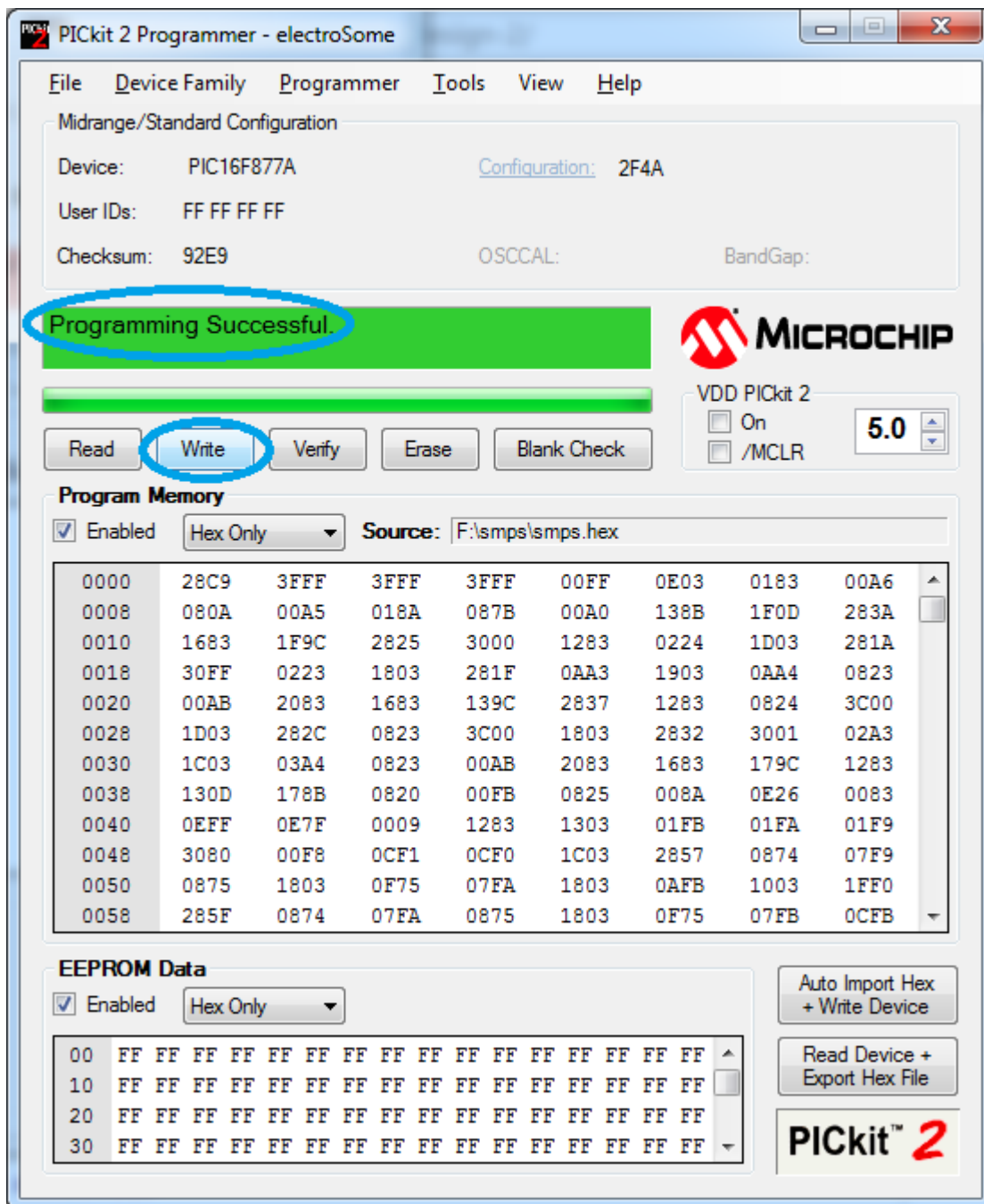


- Import the *.hex file by clicking the option in the file menu.





- Click on the write button.



- A programming successful message is displayed.