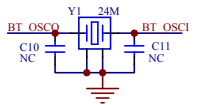
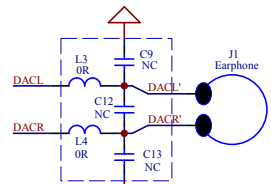


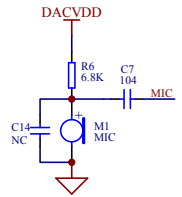
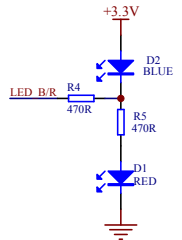
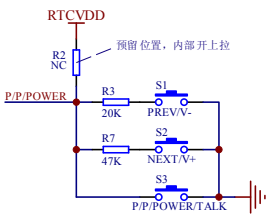
晶振选型：  
封装：可兼容3225、M49S、HC49S等不同封装  
要求：稳定性、一致性要好，频偏偏差：±10PPM以内  
电容：晶振匹配电容位置请预留



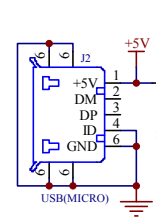
MCU



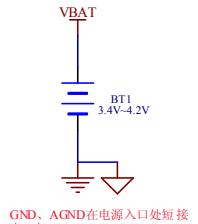
备注：LC滤波网络在Layout样板时最好预留



KEY、LED、MIC



限流电阻(0603封装)的阻值  
根据所需充电电流的大小去选取



GND、AGND在电源入口处短接

Earphone、Power